

Welcome to the Phoenix Audio Setup Utility!

The Phoenix Audio Setup Utility is designed to help you control the audio levels coming in and going out of your Phoenix products. This utility will:

- 1) Identify the Phoenix device you are using and indicate whether it's connected (or not connected).
- 2) Mute the microphone in the payback mode for all old versions of the Duet and Solo units (this feature is not required in newer versions of the Duet and in the Quattro).
- 3) Set the audio levels to a comfortable default value. Once you modify the levels the unit will save and restore your preferred levels anytime you connect a unit or open the audio utility (you can choose not to save your settings and to go back to the default values).
- 4) The utility will allow you to control the level of signal going to and coming back from your telephone (in the Quattro and newer versions of the Duet Executive). It will also allow you to control the level and balance of the bridge (the connection between your telephone counterpart and VoIP counterpart in the Quattro/Duet Executive)

This utility is not necessary in order to use and enjoy Phoenix products. Some audio levels (VoIP) can be controlled through your Windows mixers while others that are not controlled by Windows (telephone and bridge) are set to a comfortable default level. However, this utility adds another level of control that some users prefer to have.

An important feature of the utility is the ability to disable / enable the bridge connection. This is intended to prevent your telephone counterpart from hearing unwanted sounds coming out of your computer.

This user manual was created to aid you in operating the audio setup utility. Please read the manual carefully before using this application. For additional questions or inquiries please visit us at www.phnxaudio.com

We also recommend checking our website frequently for updates and new versions of software.

Installing the Phoenix Audio Setup Utility

Before installing, make sure your operating system is a version of Windows 98 or newer.

If you already have an older version of the Phoenix Audio Setup you will need to uninstall it first. Please go to **"Start"** -> **"Control Panel"** -> **"Add or Remove Programs"**, look for **"Duet Audio Setup"** and choose **"Remove"**.

Locate the installation file downloaded to your PC. Run the installation wizard by double-clicking on the file icon and choosing **"Run"**.

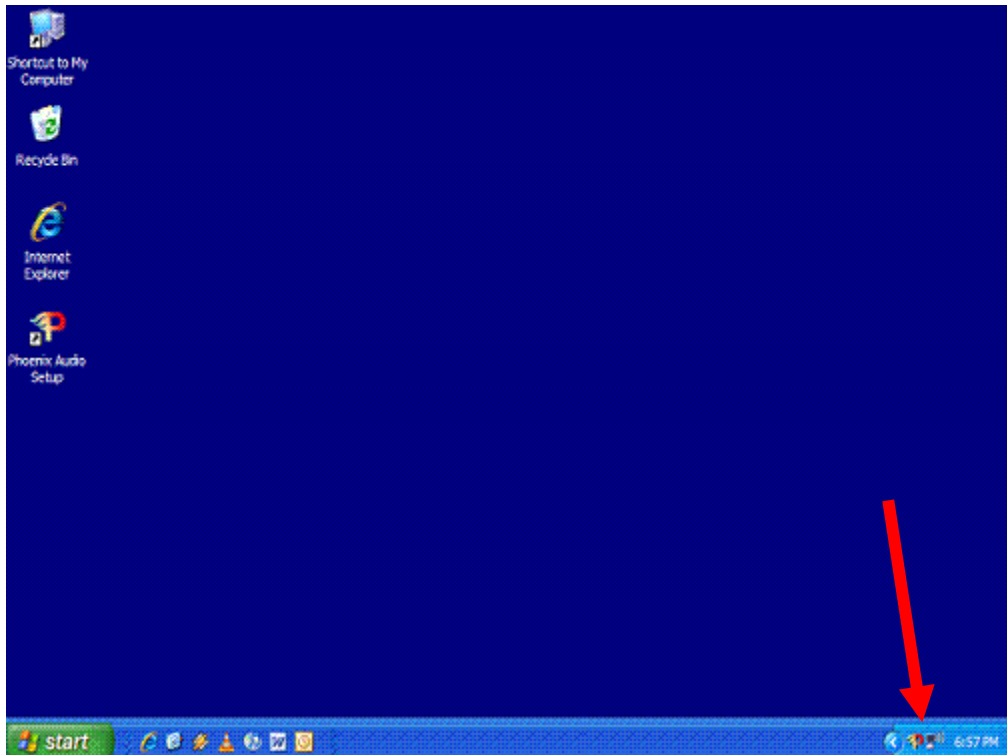
Follow the instructions on the installation wizard, and click finish when done.

A shortcut for the Phoenix Audio Setup Utility will automatically be placed on your Windows' desktop screen after installation. Once installed, you can double-click on the shortcut to launch the utility. To uninstall this software use the Windows Add / Remove utility. To do so click on **"Start" -> "Control Panel" -> "Add or Remove Programs"**. After clicking **"Add or Remove Programs"** you should scroll down the list of software applications installed on your PC until you find **"Phoenix Audio Setup"**. Once found, click on the **"Remove"** button next to it and then click **"Yes"**.

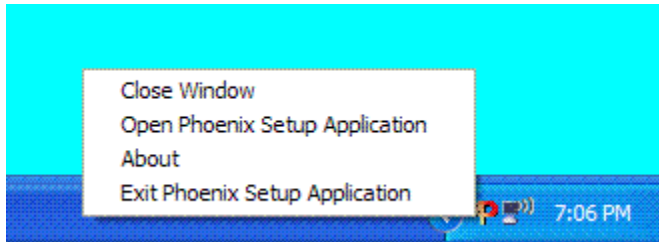
How to use the Phoenix Audio Utility

Once installed, you can run the utility by either double clicking on the shortcut icon placed on your desktop, going to **Start -> All Programs -> Phoenix Audio Setup**, or by finding the utility under its location address which should be **C:\Program Files\Midas\Phoenix Audio Setup**.

When the utility is opened an icon will be placed on the bottom right tray of your desktop (see arrow below). As long as the Phoenix icon is present the audio utility is active. To open the utility's control panel, simply click on the icon and the panel window will pop up. When you are done you can close the panel by clicking the "x" button on the top right corner of the panel window which will close the panel window but will not terminate the utility.



If you wish to terminate the utility, that is not have it affect the volume settings of your computer or audio devices, place your cursor over the Phoenix icon in the tray and right-click. When you right click a small menu will come up with the following four options:



“**Close Window**” – which will close that menu window.

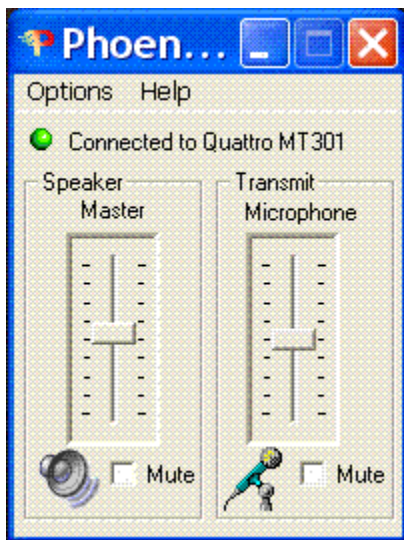
“**Open Phoenix Setup Application**” – which will open the panel window (same effect as simply clicking on the icon).

“**About**” – which will display a window with the software information.

“**Exit Phoenix Setup Application**” – which will terminate the application.

Using the Basic Control Panel

The basic control panel includes two “master” sliders that control the signal going out (microphone or transmit) and the signal coming in and broadcasted on your device’s loudspeaker (Speaker).

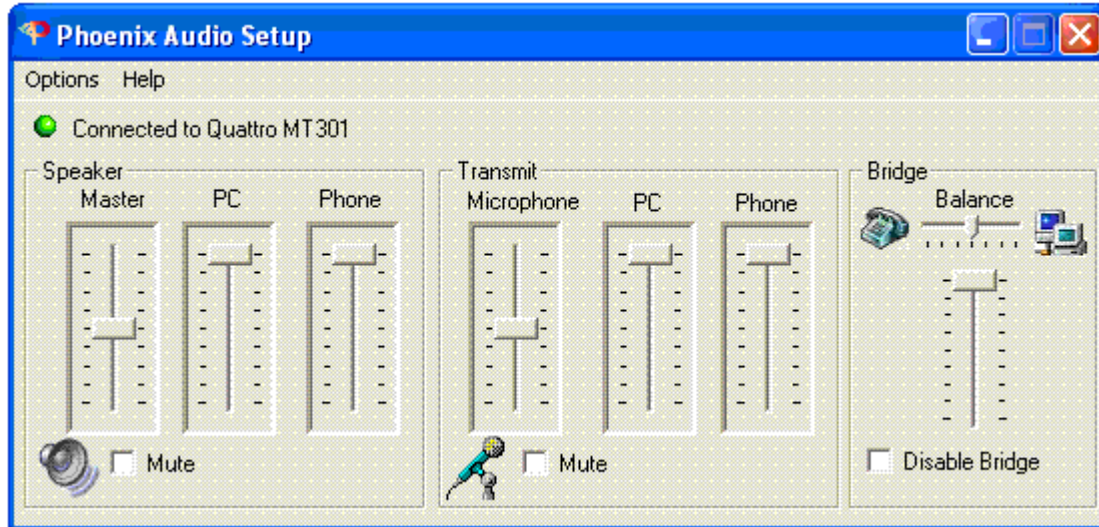


If you have a Phoenix device connected to your PC, a green dot will appear with a message saying “Connected to...”. If no device is detected a red dot will appear with a message “No Phoenix Device Connected”

You can mute your microphone and loudspeaker by checking the appropriate boxes in the control panel.

Using the Advanced Control Panel

When using a Quattro or a newer version of the Duet Executive with a telephone or VCA interface you can control the individual levels and balance the bridge by opening the advanced control panel. Go to “**Options**” and select the “**Advanced Control Panel**”.



The advanced control panel allows you to control:

Speaker:

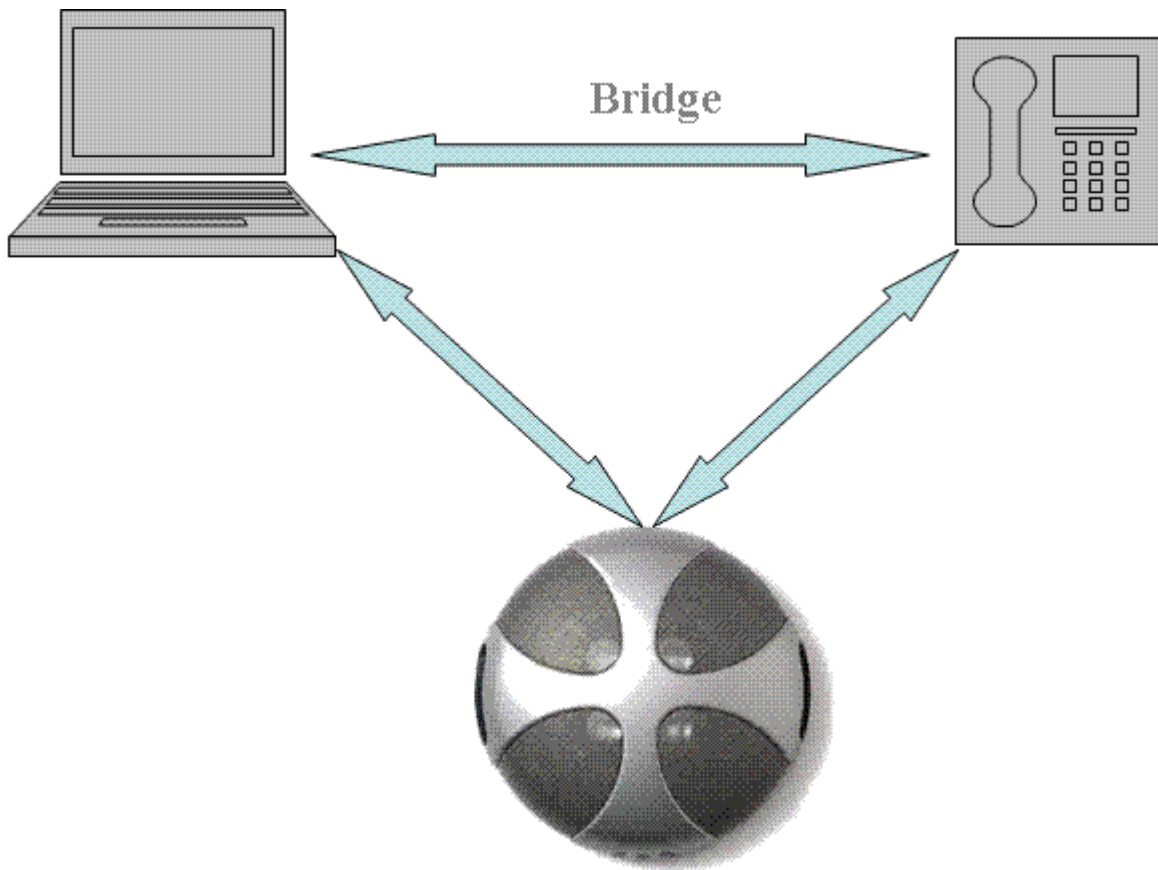
- Level of signal coming from the **PC** (VoIP communication)
- Level of signal coming from the **Phone** (or VCA)
- **Master** volume controlling directly the signal broadcasted on the device's loudspeaker

Transmit:

- Level of signal sent to the **PC** (VoIP communication)
- Level of signal sent to your **Phone** (or VCA)
- **Master** volume controlling directly the level of your internal microphone's signal

In addition, the “**Bridge Bar**” controls the level of the signal going from your phone counterpart to the PC counterpart and back (see illustration below). Dragging the bar up or down will increase (or decrease) the two levels simultaneously (when the two parties complain that the signal is too low for example). Moving the balance bar left or right will increase one side of the communication while simultaneously decreasing the other.

When checking the “**disable bridge box**” the communication from the PC going into the telephone is blocked while the communication from the telephone to the PC is always open (to allow recording). The purpose of blocking is to prevent your telephone counterpart from hearing unwanted sounds from your PC (such as internet pop-ups).



Note: the communication between the telephone (or VCA) and the PC is actually done through the Quattro or the Duet Executive, therefore the signal level between the two counterparts will affect (or is affected by) the individual volume controls of the Quattro/Duet Executive to (and from) the phone and the PC. You might notice that moving the bridge level affects other volume bars in the control panel. The utility is designed so that when modifying the bridge level the other levels will change accordingly so that the signal level you receive or transmit will remain the same.

Using the Push to Talk Feature

By default Phoenix devices are “Open Mic” devices. You can mute the microphone but in the normal mode of operation the microphone is open.

The Audio Setup Utility provides an option to use your system in a Push to Talk mode. Go to “**Options**” and select the “**Push to Talk mode**”. A Red button will appear on your screen indicating your microphone is “normally muted”. Click on the button with your mouse and hold (or the space bar) to open the microphone. When the microphone is on the button will turn green and will stay open as long as you keep pushing down on the button.

Switching back to “open microphone” mode is done by closing the button panel, or by un-checking the mode in the “**Options**” menu.

Adjusting your Volume Settings

The first time you run the utility, the levels of the audio signals are set to a comfortable level. Simply drag the slider bar up or down to adjust the levels to fit your preference.

Anytime you change the volume levels of the audio, the new settings are saved. Every time you connect your Phoenix device, or turn on your PC, these setting will be applied. If you changed the volume setting through another utility and wish to restore your settings, simply click on the Phoenix icon and your setting will be restored.

You can restore the factory setting by going to “**Options**” and clicking on “**Restore default volume levels**”.

You can also select not to save you last setting by going to “**Options**” and un-checking the “**Save volume levels on exit**” option.